

PART OF SEC. 21, T.5 N., R.1 W., S.L.B. & M.
PLEASANT VALLEY ESTATES PHASE 7

302

TAXING UNIT: 27

LOTS 75 - 78

SOUTH OGDEN CITY

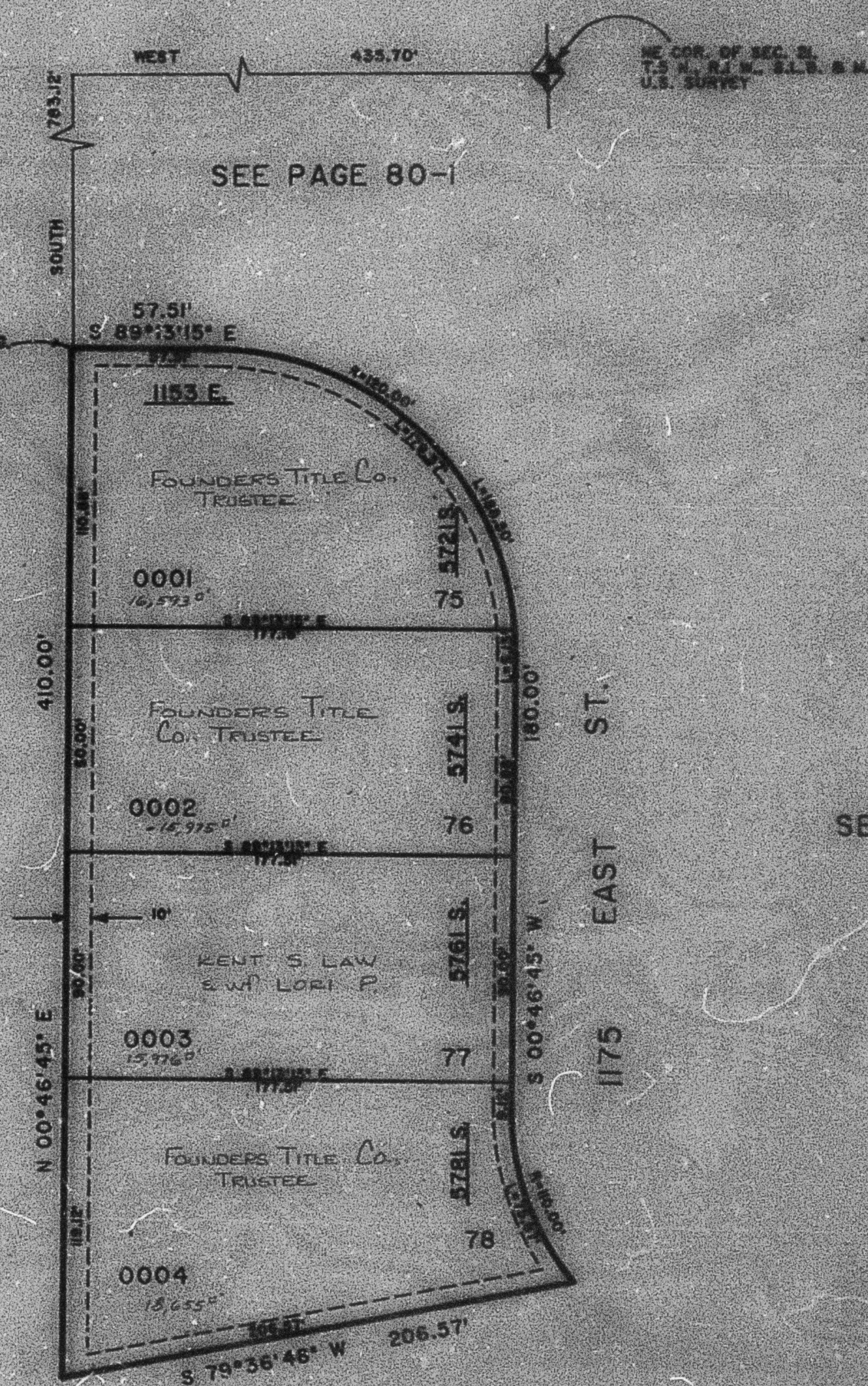
PREFIX: 07-302

SCALE 1" TO 50'

SEE PAGE 80-1

FOR COMPLETE ENG. DATA
SEE ORIG. DED. PLAT IN
BOOK 27, PAGE 60.

7" UTILITY & DRAINAGE EASEMENTS
EACH SIDE OF PROPERTY LINE AS
INDICATED BY DASHED LINES,
EXCEPT AS OTHERWISE SHOWN.



SEE PAGE 80-1